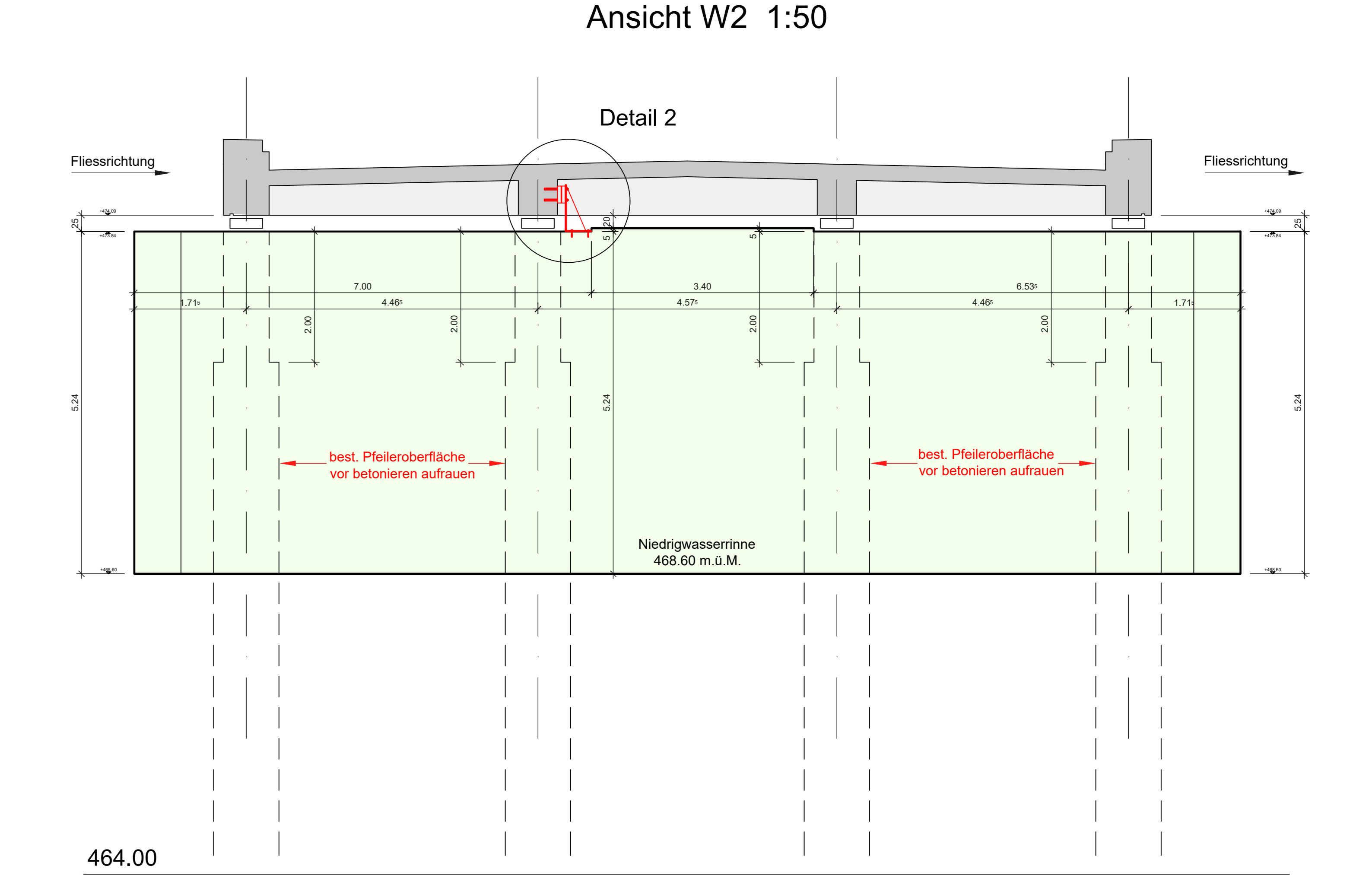
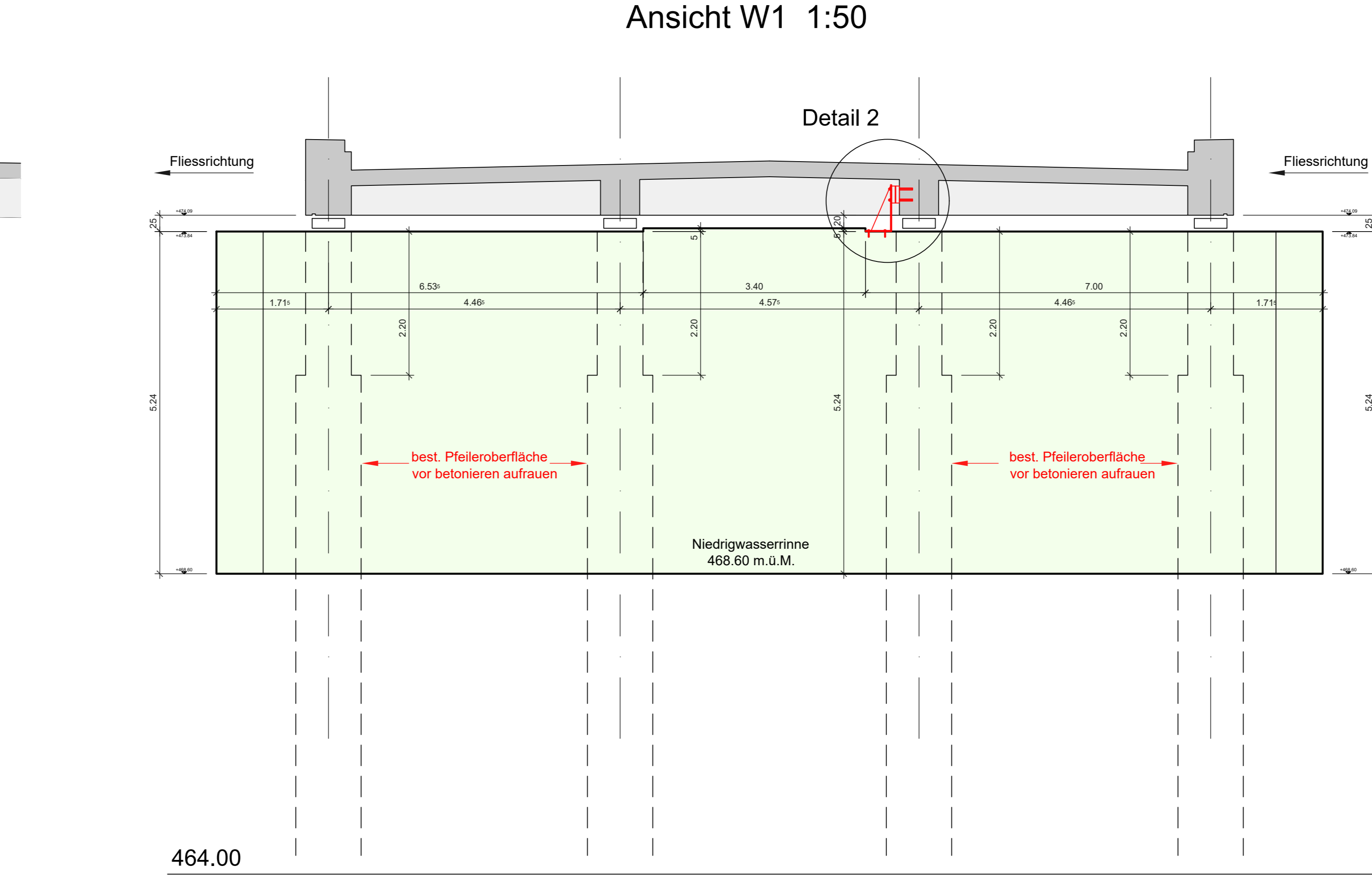
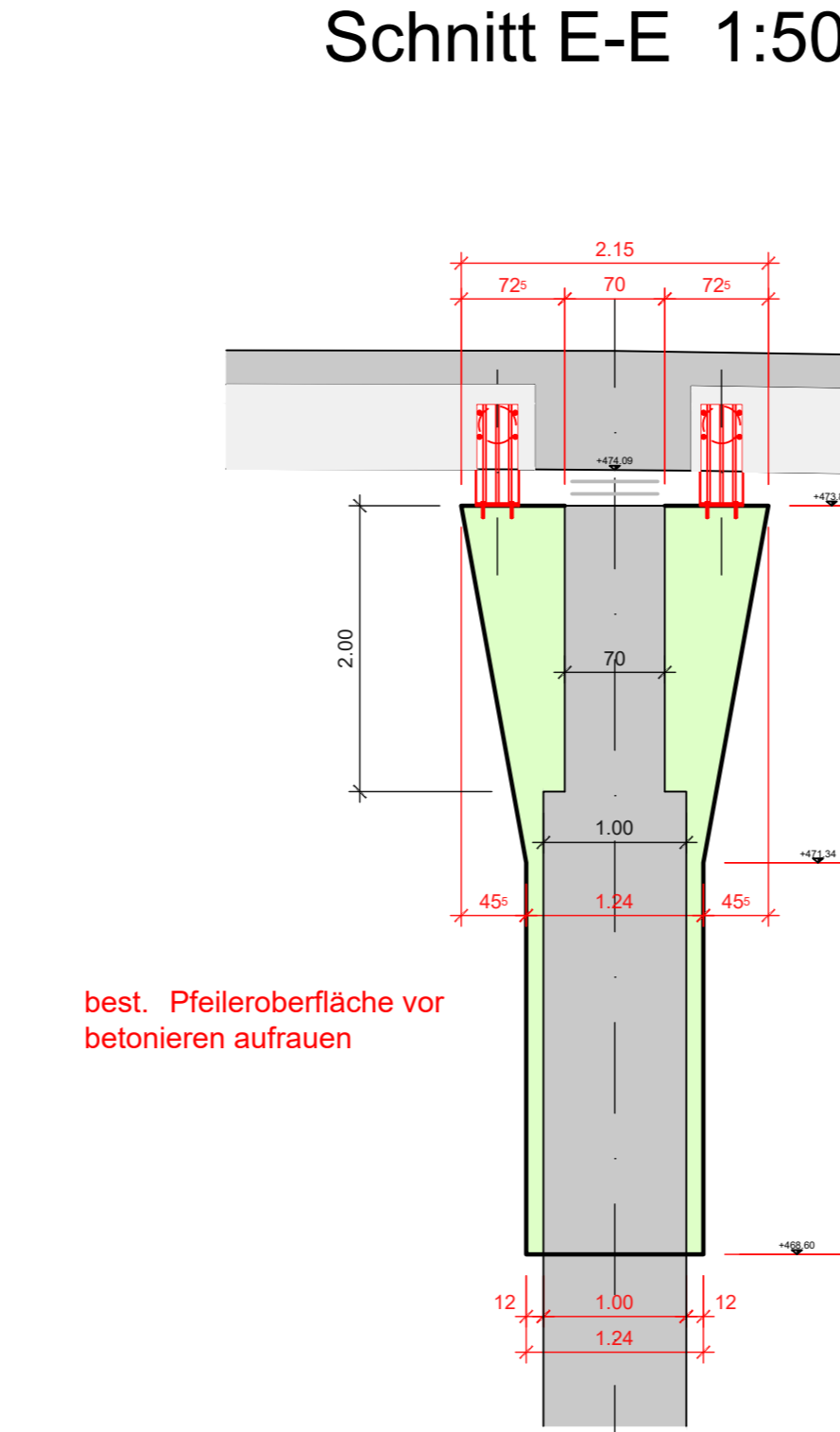
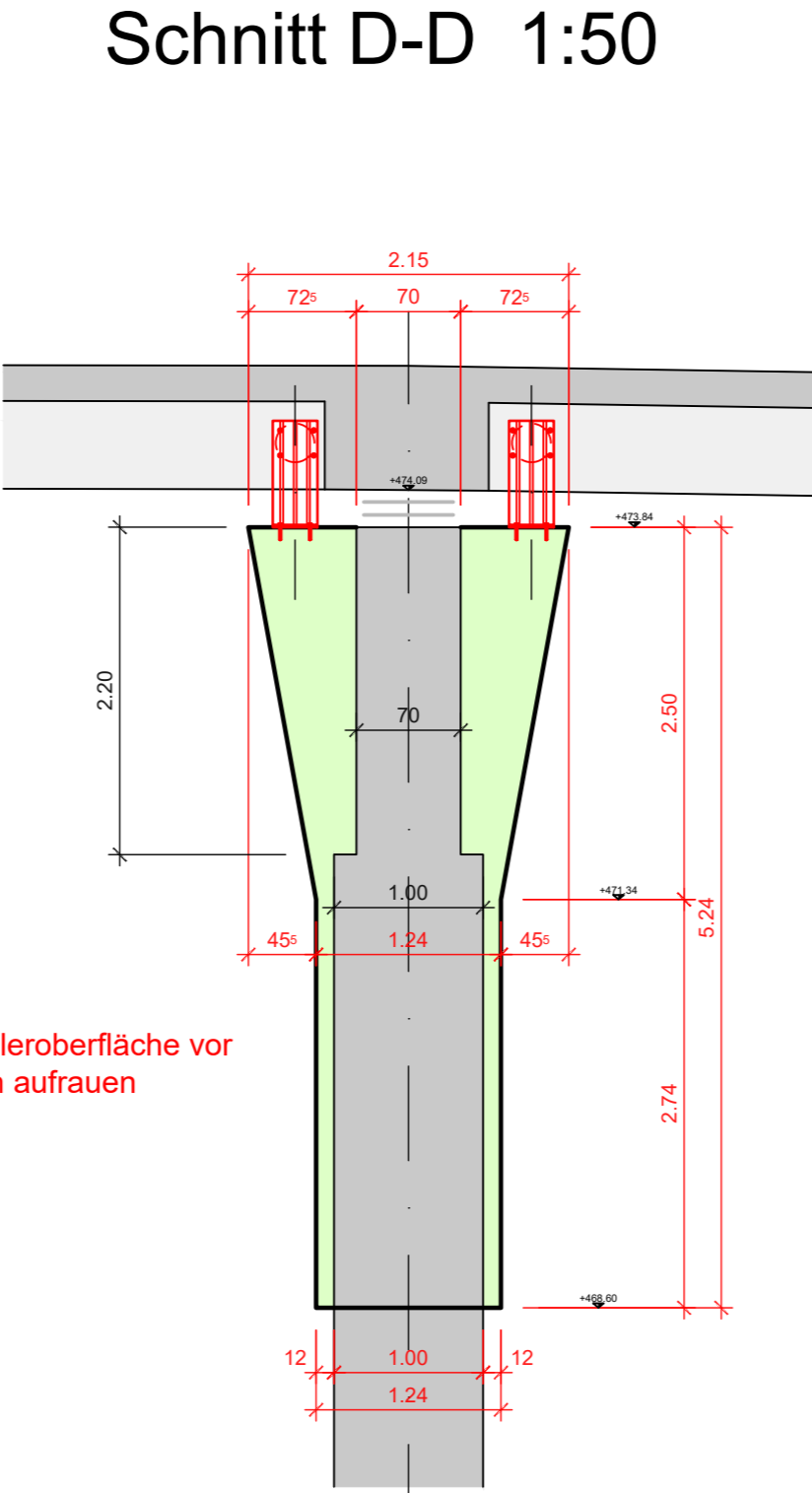
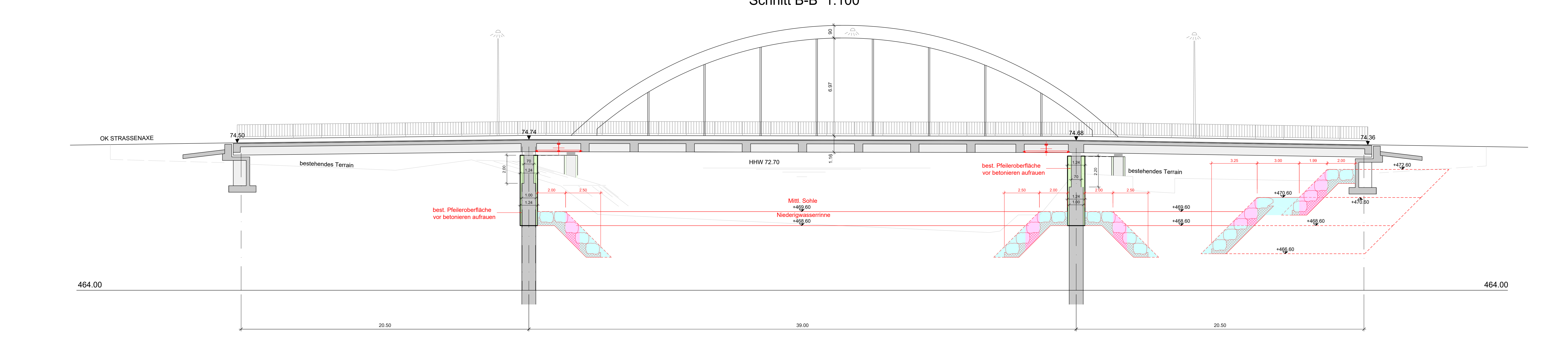
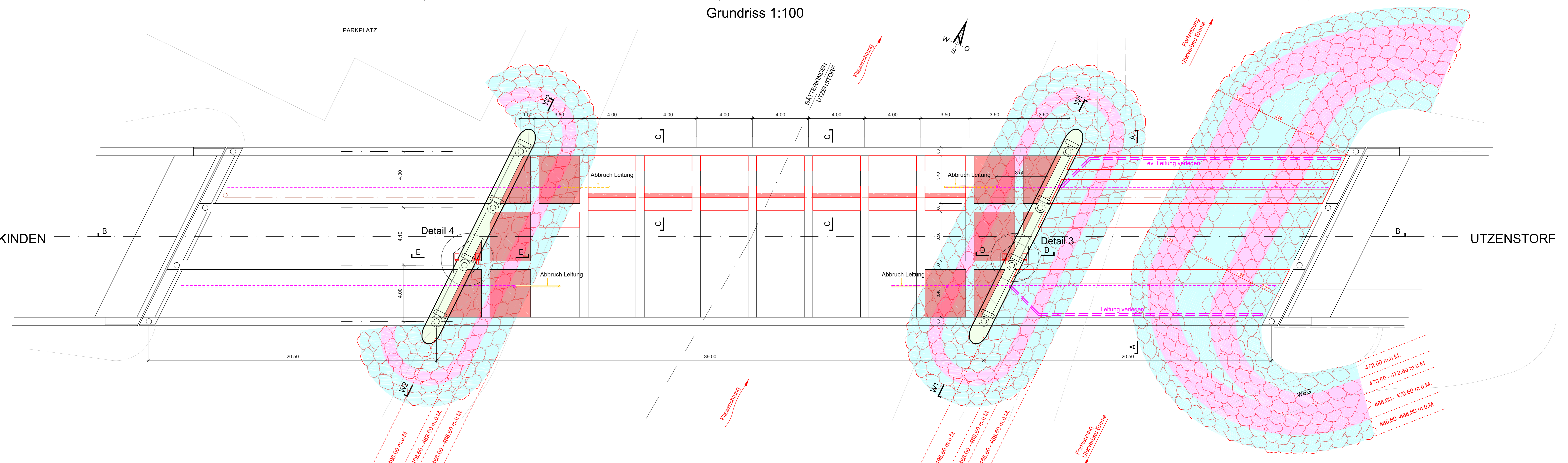
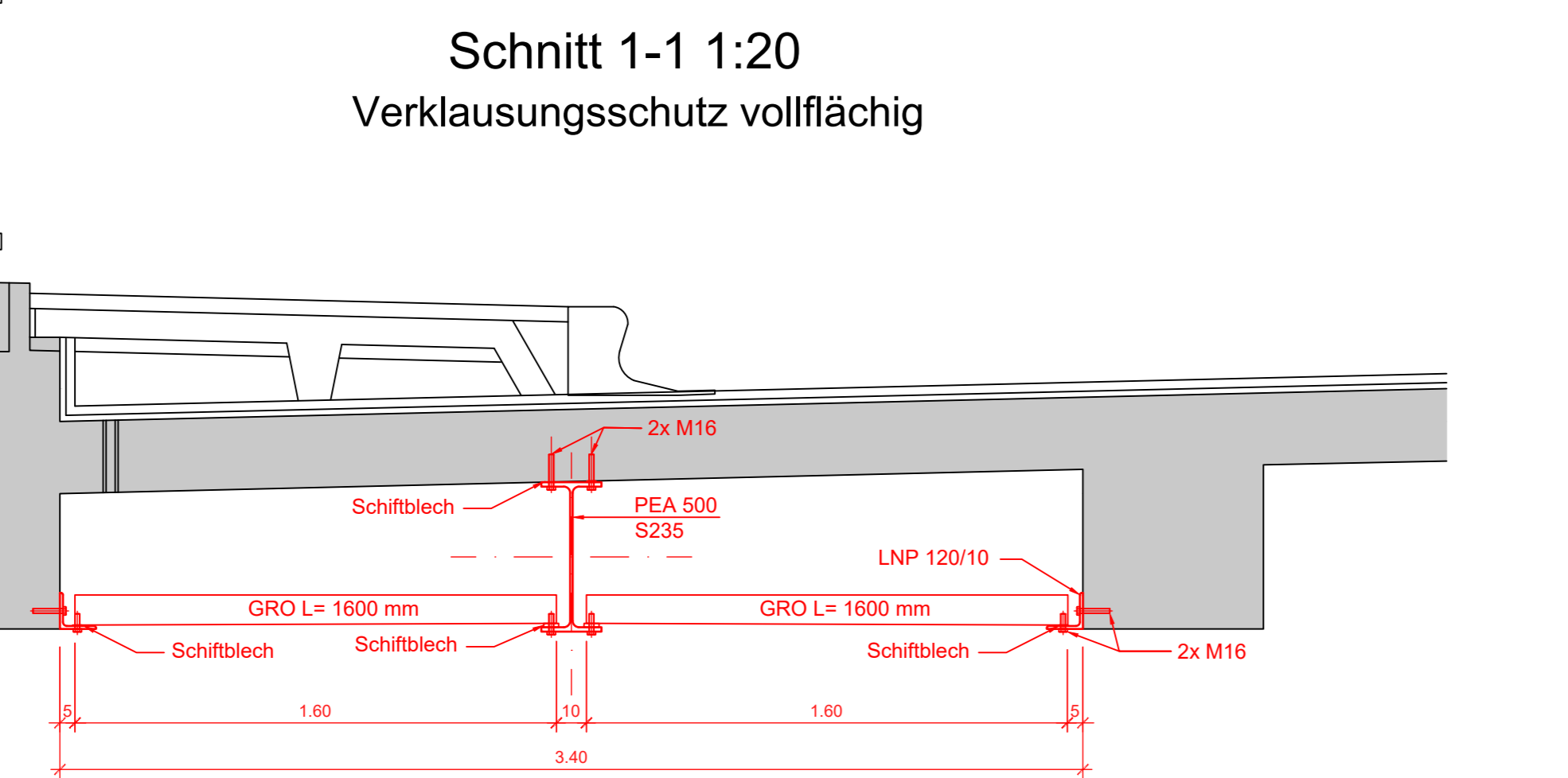
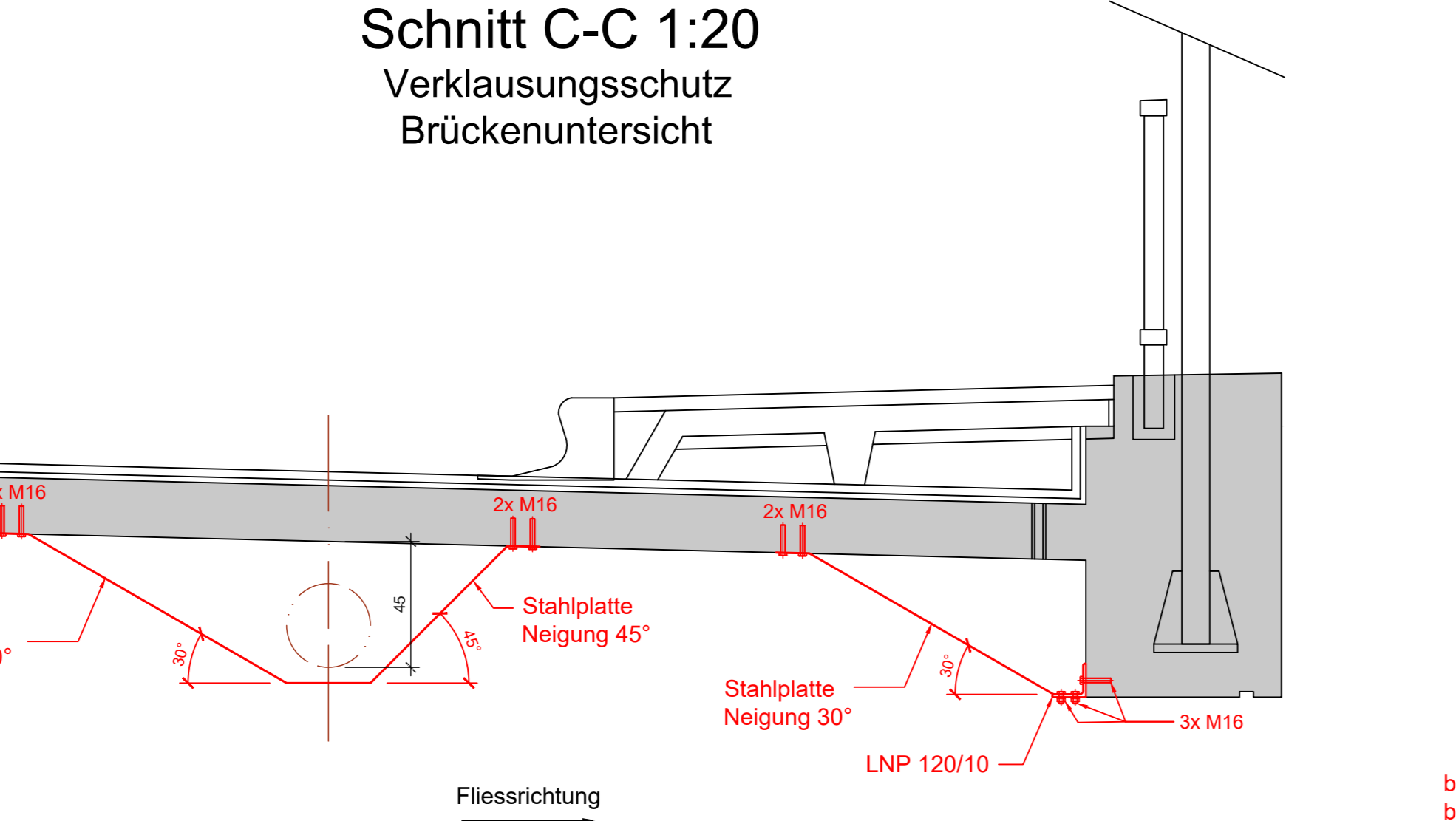
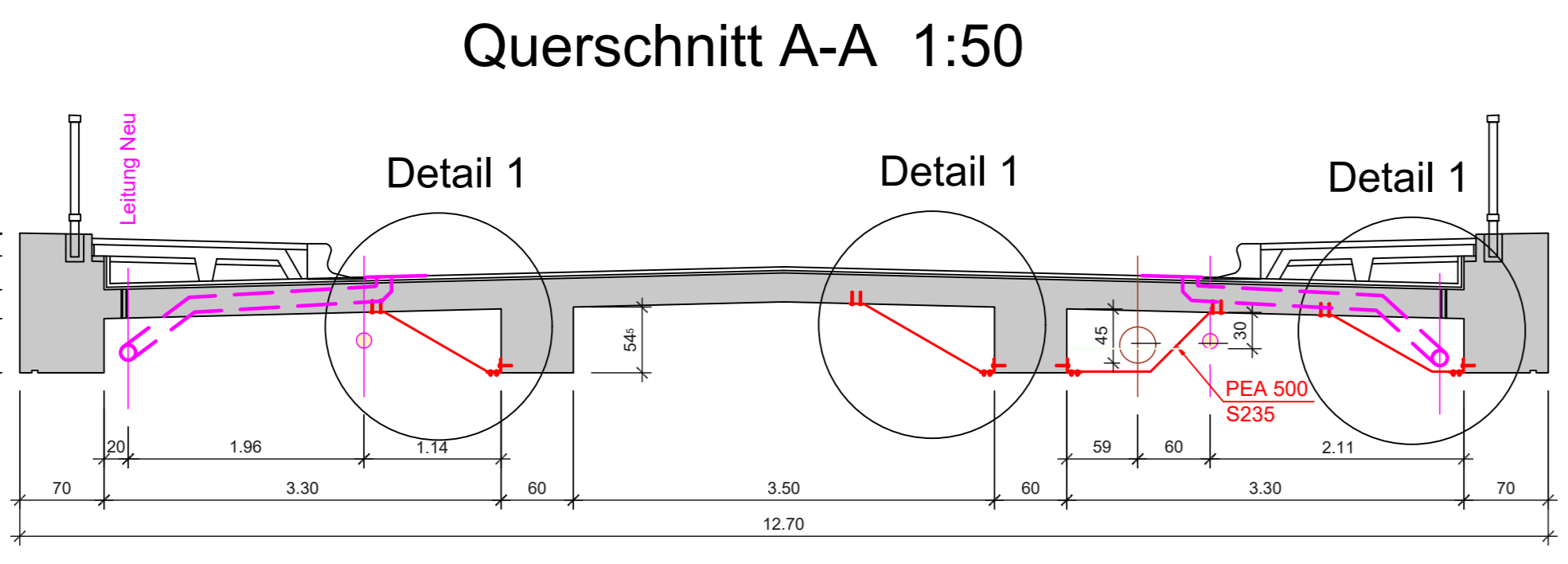
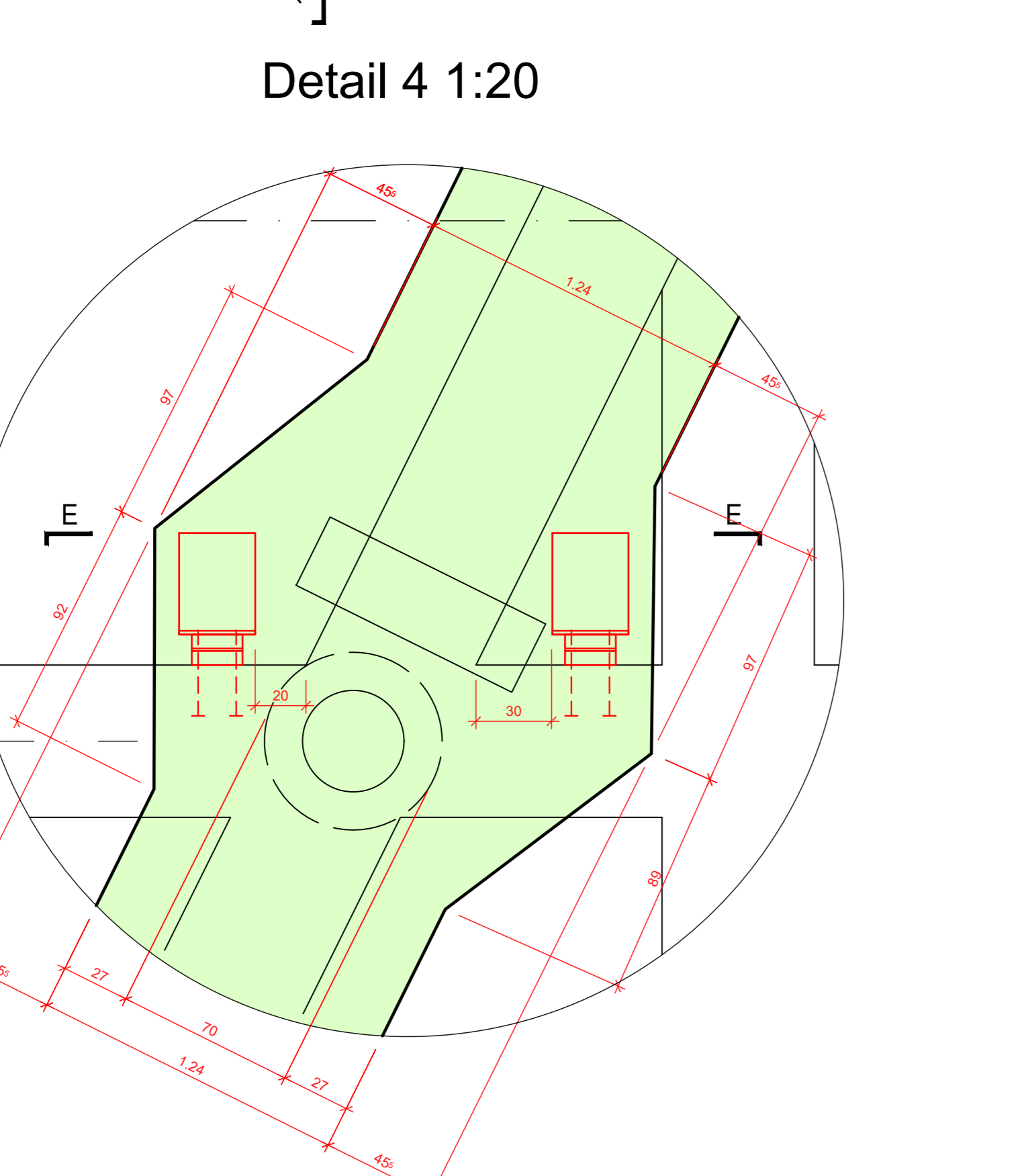
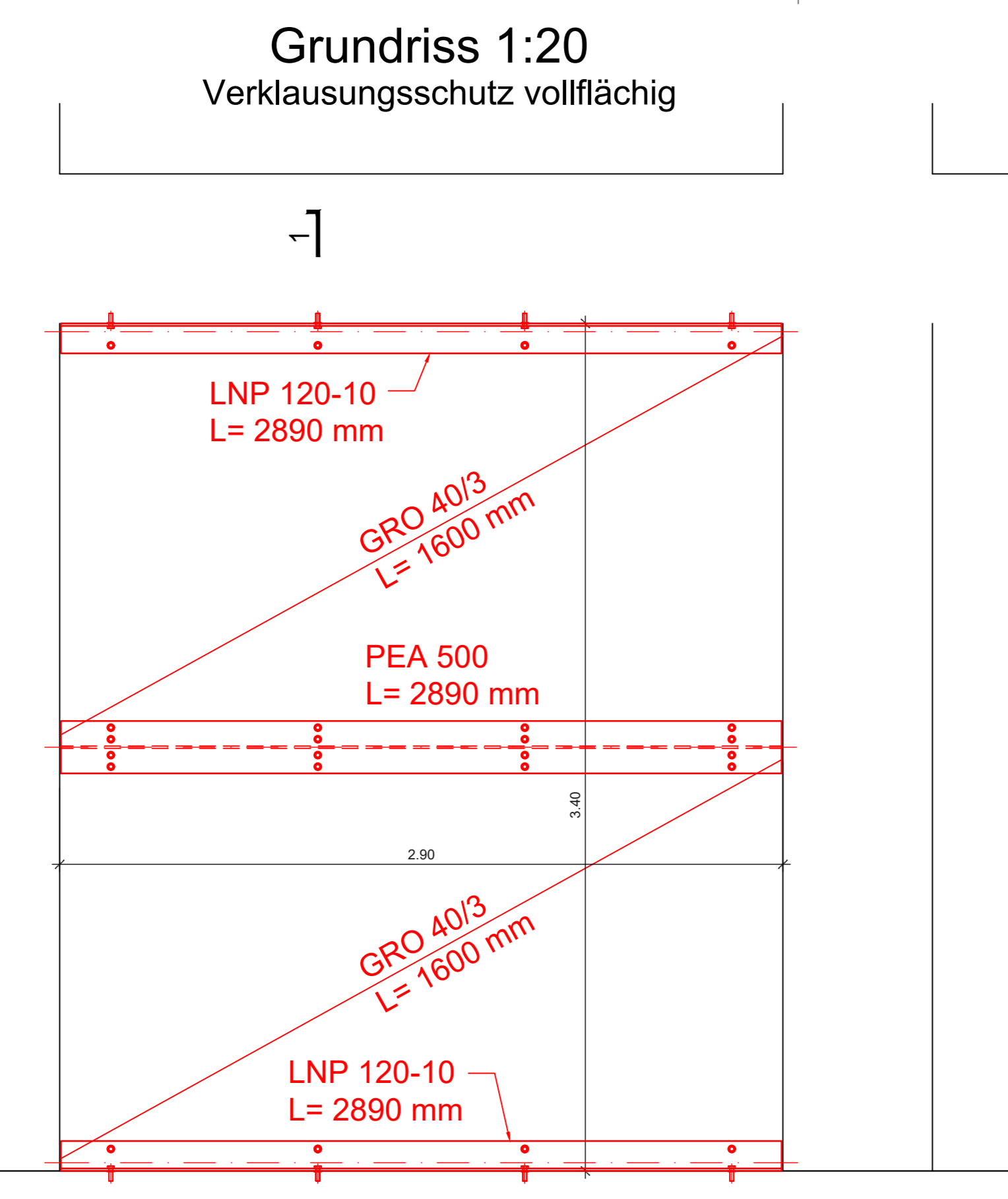


- Legende:**
- Verklattungsschutz 30°
 - Verklattungsschutz vollflächig
 - Ausfächung Pfeiler
 - Blocksatz Stein 3t in Beton UK unter Kolkentiefe



Rev.	Datum	Änderung	Gezeichnet	Geprüft
A	01.03.2019			
B				
C				

Baudirektion des Kantons Bern
Oberingenieure Kreis IV und III
Emmebrücke, Utzenstorf - Bätterkinden, Strasse Nr. 242

Grundriss, Längs- und Querschnitte, Detail
Grundriss 1:100, Längsschnitt 1:100, Querschnitte 1:50, 1:20
Massnahmenplan

GEZ.	DATUM	VIS.	MST.	1:100/50/20	PLAN NR.
SI	01.03.2019	MH			1818-10
FORMAT				90/168	

INGENIEURBÜRO FÜR HOCH- UND TIEFBAU
Bern / Herzogenbuchsee / Thun
Egiphaner 70 | 3006 Bern | Tel. 031 350 01 01
info@h-w-ingen.ch | www.h-w-ingen.ch

H&W
HARTENBACH+WENGER AG